

ELECTRIC HYDRAULIC PUMP

UP-35RH series



Model : UP-35RH NCL

- Large Tank Oil : 2.0 Litre
- Effective Oil : 1.6 Litre



Model : UP-35RH NC

- Standard Tank Oil : 1.0 Liters
- Effective Oil : 0.8 Litres

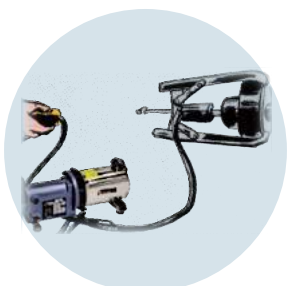
Ultra compact

This UP35RH series is a high performance, ultra small size, lightweight electric hydraulic pump that can be used for all hydraulic tools. It is a best-selling product with high durability.

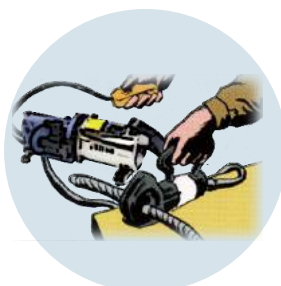
- Maximum Operating Pressure:70Mpa (700Bar)
- Combines the portability of the manual hydraulic pump and the performance of the electric hydraulic pump.
- Two-speed operation reduces cycle times for improved productivity.
- Ideal for work in narrow places and high places.
- The tank capacity is 1 liter for standard and 2 liters for L tank.
- Optionally it is possible to attach pressure switch to all models.
- Using the inner bag, you can use the pump at any angle.



Jacking up



Gear, pulley removal



Wire/rope/cable cutting



Punching

Single Acting

UP-35RH-NC Standard tank : 1 ℓ

UP-35RH-NCL L tank : 2 ℓ

Valve type	Solenoid
Switch	Pendant switch / ON and OFF button
Feature	For single acting model. Cylinder can be stopped on "Advance".



UP-35RH-NC

UP-35RH-NCL



Advance

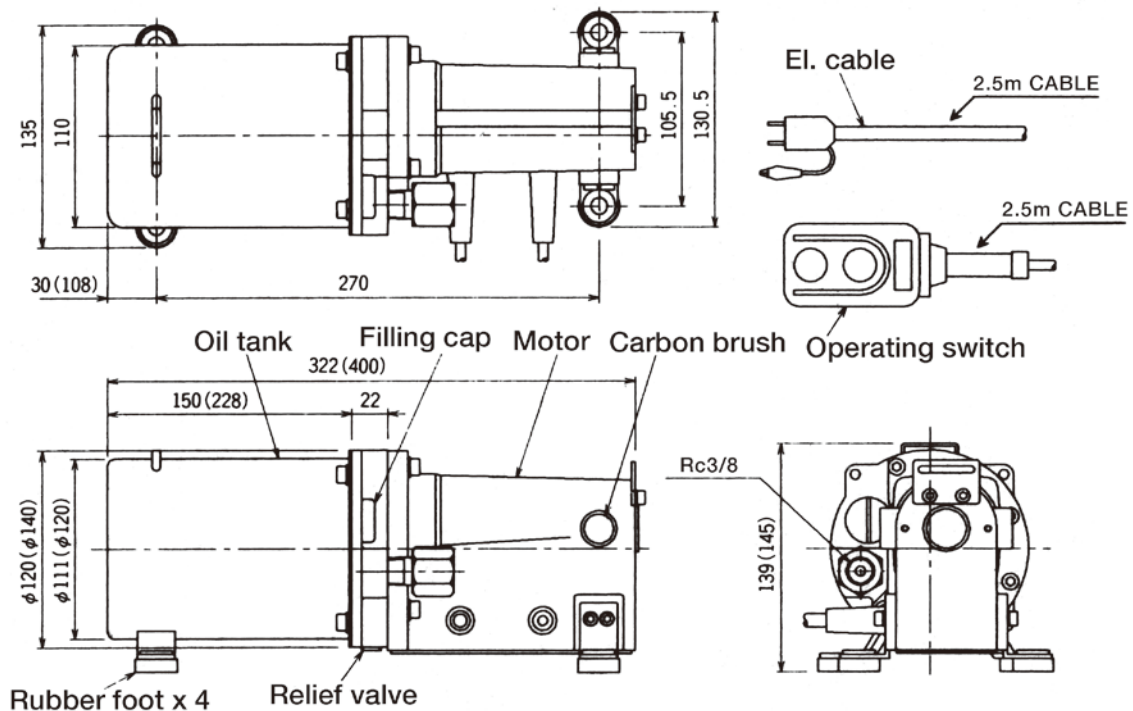
When ON switch is pressed, then the motor starts. When ON switch is released, the cylinder can be stopped.(NOT hold pressure)

Retraction

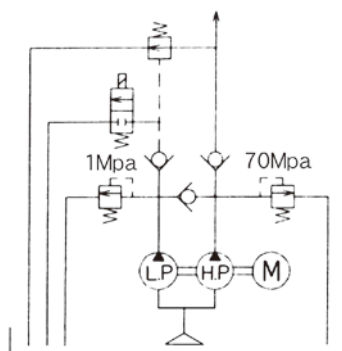
When OFF switch is pressed, the cylinder retracts at once. Cylinder cannot be stopped on retraction.

Model	Electric Motor	Mortor kW (2,000rpm)	Voltage (AC) 50Hz/60Hz	Amps	Output Flow Rate (Lpm)		Oil Volume (Liter)		Weight (Including oil)
					1Mpa (10Bar)	70Mpa (700Bar)	Tank	Effective	
UP-35RH-NC	Commutator, Single phase	0.35	220/230	4.5	2.0	0.2	1.0	0.8	7.5Kg
			100/110	9.0					
UP-35RH-NCL (Large Tank)			220/230	4.5			2.0	1.6	8.7Kg
			100/110	9.0					

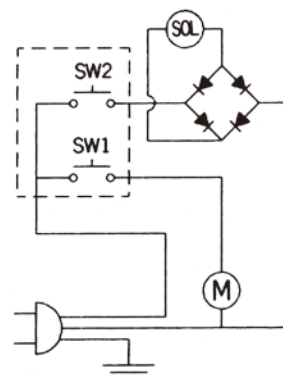
<Dimensions> (mm) ※Dimensions in parentheses are 2 liters tank.



<Hydraulic circuit>



<Electric circuit>



Single Acting

UP-35RH-NO Standard tank : 1 ℓ

UP-35RH-NOL L tank : 2 ℓ

Valve type	Solenoid Auto return type
Switch	Pendant switch / ON button only
Feature	Operation is possible only with the ON button.

Advance

When ON switch is pressed, then the motor starts as well as a cylinder extends.

Retraction

When ON switch is released, the cylinder automatically retracts at once. The cylinder cannot be stopped on retraction. There is no "OFF" button.

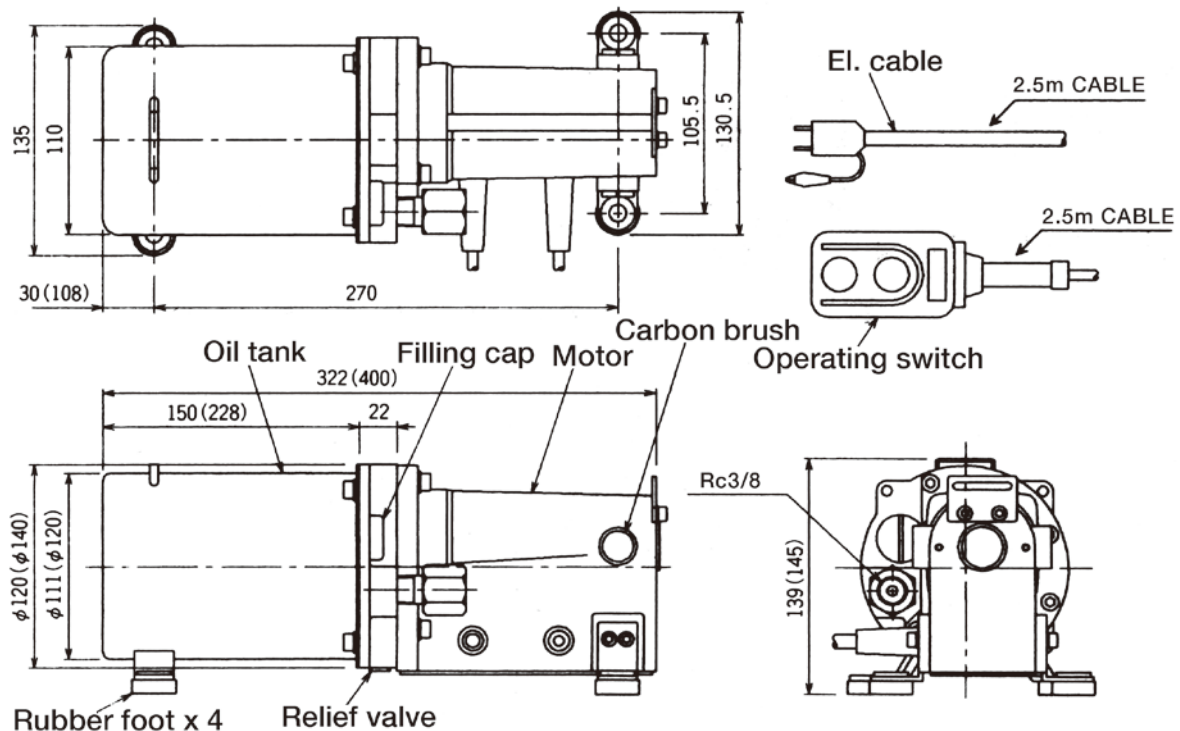


UP-35RH-NOL

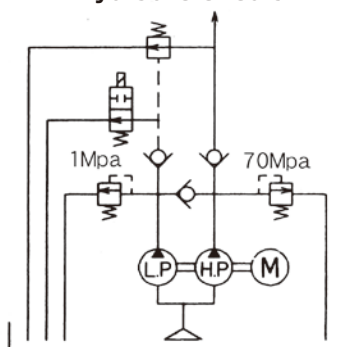


Model	Electric Motor	Mortor kW (2,000rpm)	Voltage (AC) 50Hz/60Hz	Amps	Output Flow Rate (Lpm)		Oil Volume (Liter)		Weight (Including oil)
					1Mpa (10Bar)	70Mpa (700Bar)	Tank	Effective	
UP-35RH-NO	Commutator, Single phase	0.35	220/230	4.5	2.0	0.2	1.0	0.8	7.5Kg
			100/110	9.0					
UP-35RH-NOL (Large Tank)			220/230	4.5			2.0	1.6	8.7Kg
			100/110	9.0					

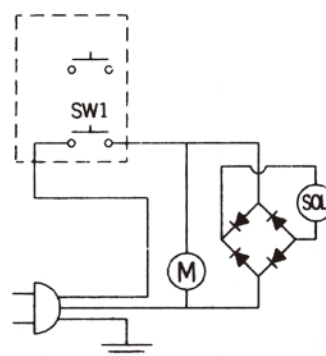
<Dimensions> (mm) ※Dimensions in parentheses are 2 liters tank.



<Hydraulic circuit>



<Electric circuit>



UP-35RH-IN

Standard tank : 1 ℓ

UP-35RH-INL

L tank : 2 ℓ

Valve type	Solenoid Holding type
Switch	Pendant switch / ON and OFF button
Feature	Single acting model. Can hold on "Advance" as well as stop on "Retract".



UP-35RH-IN

Advance

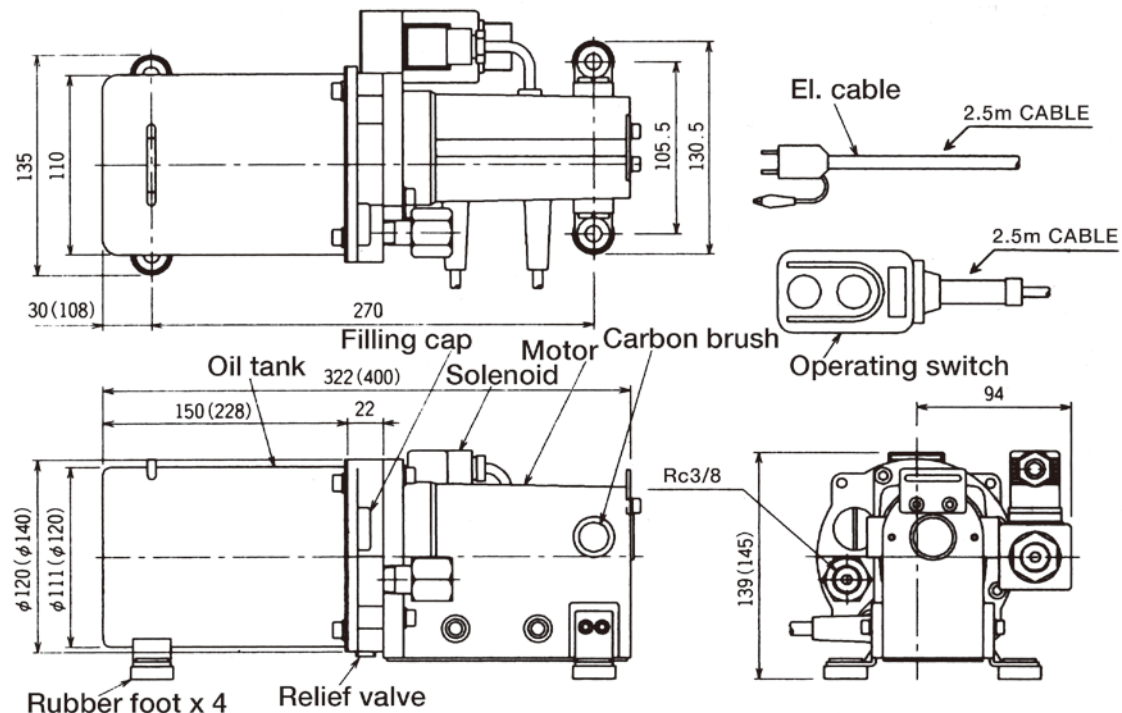
When ON switch is pressed, then the motor starts. When ON switch is released, the cylinder can be stopped and hold on advance.

Retraction

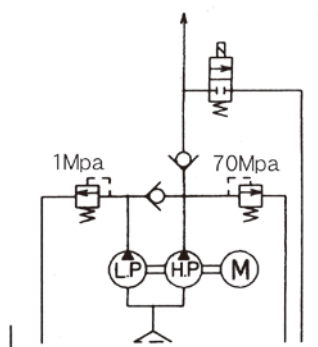
When OFF switch is pressed, then the cylinder starts to retract. When OFF switch is released, the cylinder can be stopped on retraction.

Model	Electric Motor	Mortor kW (2,000rpm)	Voltage (AC) 50Hz/60Hz	Amps	Output Flow Rate (Lpm)		Oil Volume (Liter)		Weight (Including oil)
					1Mpa (10Bar)	70Mpa (700Bar)	Tank	Effective	
UP-35RH-IN	Commutator, Single phase	0.35	220/230	4.5	2.0	0.2	1.0	0.8	7.8Kg
			100/110	9.0					
UP-35RH-INL (Large Tank)			220/230	4.5			2.0	1.6	9.0Kg
			100/110	9.0					

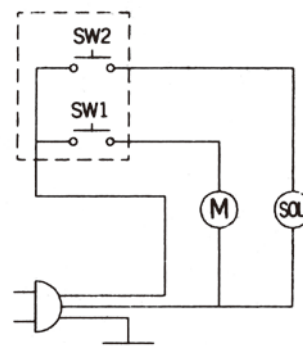
<Dimensions> (mm) ※Dimensions in parentheses are 2 liters tank.



<Hydraulic circuit>



<Electric circuit>



Single Acting

UP-35RH-2M

Standard tank : 1 ℓ

UP-35RH-2ML

L tank : 2 ℓ



UP-35RH-2ML

Valve type	Manual Stop Valve
Switch	Pendant switch / ON button only
Feature	Actuate single acting cylinder by manual 2 way valve. High and Low pressue pumps make it fast speed.

Advance

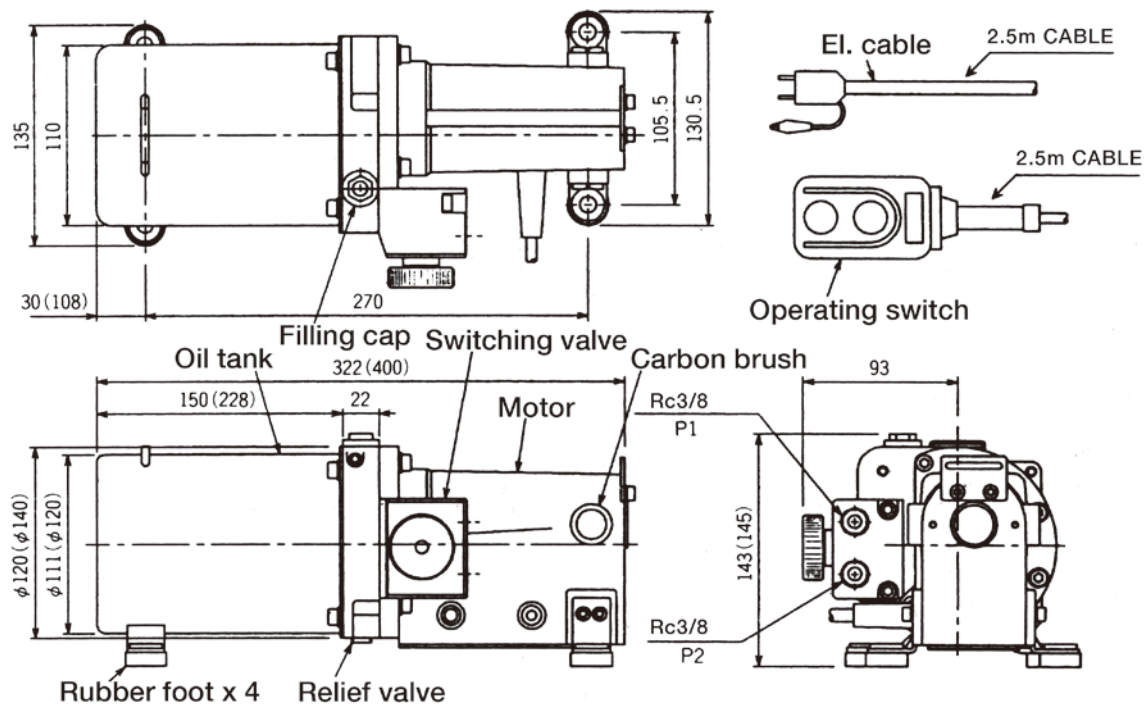
When ON switch is pressed, then the motor starts as well as a cylinder extends.

Retraction

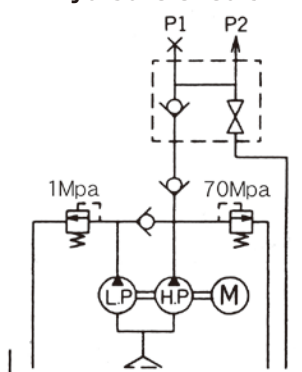
By turning the release valve to the left by finger, the oil in the cylinder returns to the tank. The cylinder can be stopped on retraction.

Model	Electric Motor	Mortor kW (2,000rpm)	Voltage (AC) 50Hz/60Hz	Amps	Output Flow Rate (Lpm)		Oil Volume (Liter)		Weight (Including oil)
					1Mpa (10Bar)	70Mpa (700Bar)	Tank	Effective	
UP-35RH-2M	Commutator, Single phase	0.35	220/230	4.5	2.0	0.2	1.0	0.8	8.5Kg
			100/110	9.0					
UP-35RH-2ML (Large Tank)			220/230	4.5			2.0	1.6	9.7Kg
			100/110	9.0					

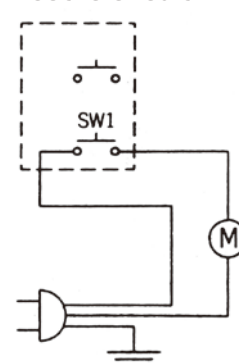
<Dimensions> (mm) ※Dimensions in parentheses are 2 liters tank.



<Hydraulic circuit>



<Electric circuit>



Double Acting

UP-35RH-4M Standard tank : 1 ℓ

UP-35RH-4ML L tank : 2 ℓ

Valve type	Solenoid 4 way-3 position
Switch	Pendant switch / ON button only
Feature	For double acting cylinder
Lever	A, center, B (3 position) You can select from four types of manual valves depending on the work content.



UP-35RH-4ML

When value type is below,
A, center, B

Advance

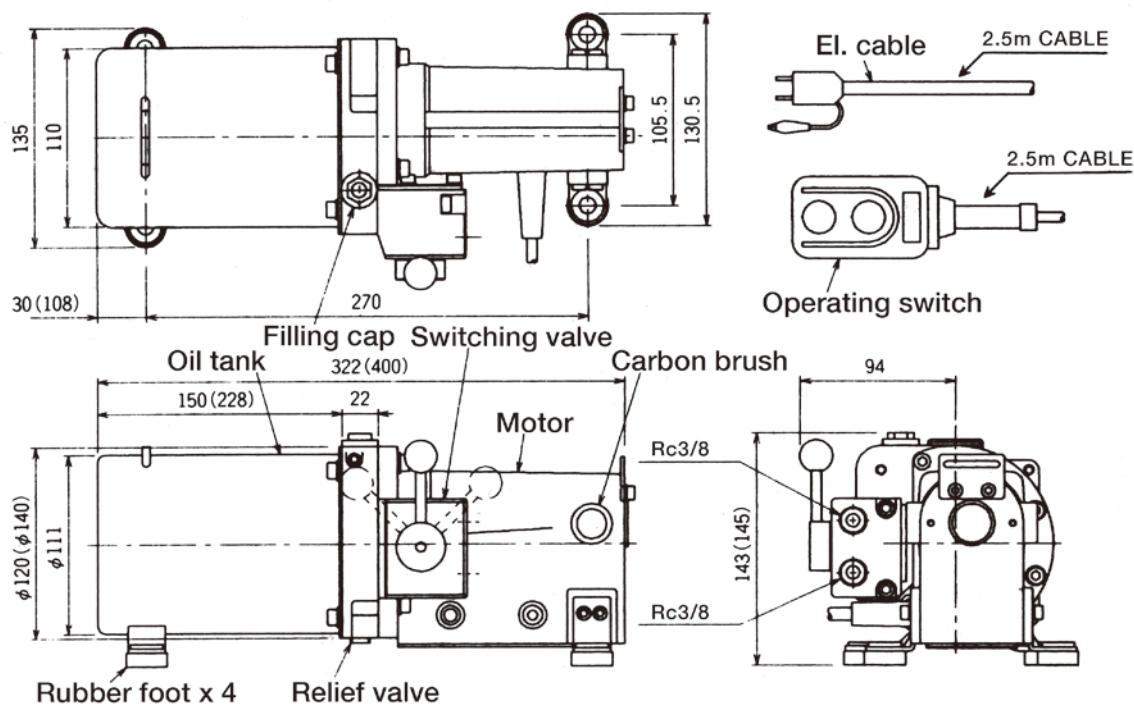
When the lever is A, pressing ON of the operation switch rotates the motor and oil flows to the A port. At this time, the B port oil is drained to the tank.

Retraction

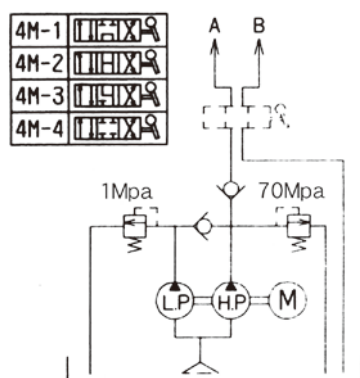
When the lever is B, pressing ON of the operation switch rotates the motor and oil flows to the B port. At this time, the A port oil is drained to the tank.

Model	Electric Motor	Mortor kW (2,000rpm)	Voltage (AC) 50Hz/60Hz	Amps	Output Flow Rate (Lpm)		Oil Volume (Liter)		Weight (Including oil)
					1Mpa (10Bar)	70Mpa (700Bar)	Tank	Effective	
UP-35RH-4M	Commutator, Single phase	0.35	220/230	4.5	2.0	0.2	1.0	0.8	8.5Kg
			100/110	9.0					
UP-35RH-4ML (Large Tank)			220/230	4.5			2.0	1.6	9.7Kg
			100/110	9.0					

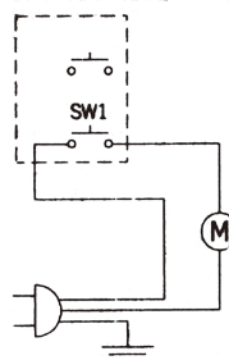
<Dimensions> (mm) ※Dimensions in parentheses are 2 liters tank.



<Hydraulic circuit>



<Electric circuit>



OPTION

Pressure Gauge Type

UP-35RH G-xx

For pressure gauge type, G is attached to model number.

Exapmles

UP-35RH G-NC (Standard tank 1 Liter)

UP-35RH G-IN (Standard tank 1 Liter)

UP-35RH G-INL (L tank 2 Liters)



Pressure Switch and Pressure Gauge Type

UP-35RH GS-xx

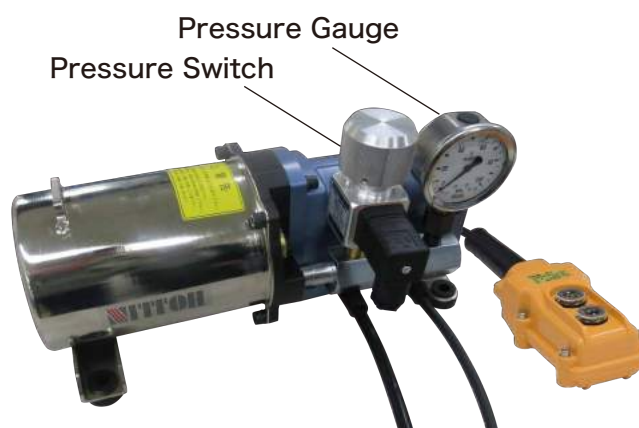
For Pressure Switch and pressure gauge type, GS is attached to model number.

Exapmles

UP-35RH GS-NC (Standard tank 1 Liter)

UP-35RH GS-IN (Standard tank 1 Liter)

UP-35RH GS-INL (L tank 2 Liters)



Pressure Gauge Type

UP-35RH DPS-xx

For Pressure Switch and pressure gauge type, DPS is attached to model number.

Exapmles

UP-35RH DPS-NC (Standard tank 1 Liter)

UP-35RH DPS-IN (Standard tank 1 Liter)

UP-35RH DPS-INL (L tank 2 Liters)

Digital Pressure switch and Gauge



Nittoh Zohki Co.,Ltd.

Sales office :

2-4-10 Kamezawa, Sumida-ku, Tokyo 130-0014 Japan
Tel. +81-3-3625-6551 Fax.+81-3-3625-6553

Factory :

585 Takashi, Mobara-shi, Chiba-Ken 297-0029 Japan
<http://www.nittohpower.jp>