

ELECTRIC HYDRAULIC PUMP

UP-65SV series

Model : UP-65SVG-7

- Large Tank Oil : 5.0 Litre
- Effective Oil : 4.0 Litres



Model : UP-65SVG-4L

- Large Tank Oil : 5.0 Litre
- Effective Oil : 4.0 Litres



Small & Fast

- A cooling fan is standard equipment.
- Parts for countermeasures against pulsation are installed inside the pump.
- It achieved 4 liters per minute with low pressure 7 MPa (70 kgf/cm²).
- Since it is compatible with single-phase 100V~230V power supply, it can be used anywhere in the field.
- Adopting high and low pressure automatic two-stage switching pump, we realized efficiency of work.
- With abundant variations of accessories, UP65 can be used for various purposes.
- An optional pressure switch for safety control can be attached to all pumps.

Single Acting

UP-65SVG-1

UP-65SVG-1 (Pressure gauge, Standard tank 3 ℓ)

UP-65SVG-1L (Pressure gauge, L tank 5 ℓ)

UP-65SVS-1 (Pressure gauge, Pressure Switch, Standard tank 3 ℓ)

UP-65SVS-1L (Pressure gauge, Pressure Switch, L tank 5 ℓ)



Valve type	Manual 2way-2position Holding type
Switch	Pendant switch / ON button only
Feature	For Single Acting Cylinder by manual 2 way valve

Advance

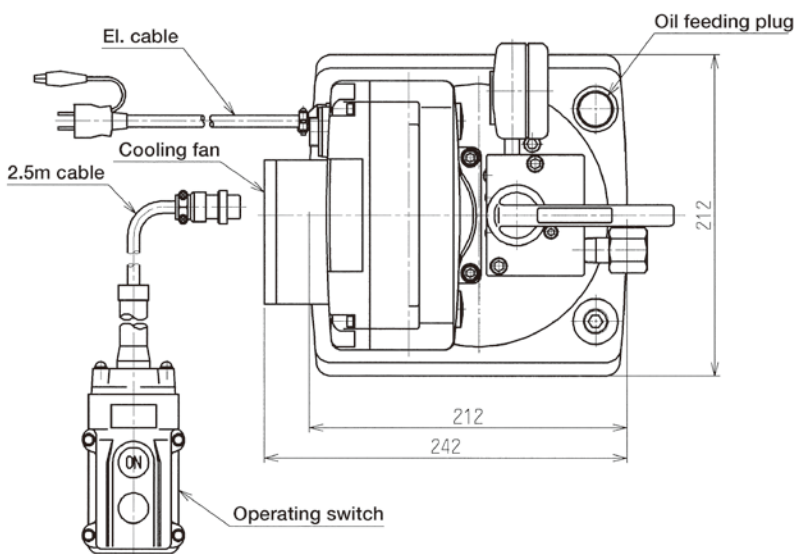
When the manual valve lever is set to the right, and press ON of the pendant switch, the motor rotates, and the cylinder advances. When ON switch is released, the cylinder can be stopped and hold on advance.

Retraction

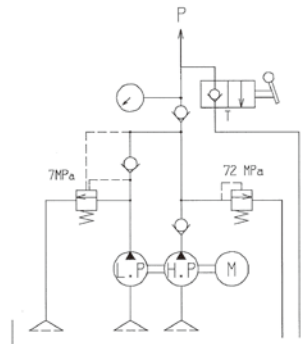
When the manual valve lever is set to the left ,the cylinder returns. There is no OFF button.

Model	Electric Motor	Mortor kW (2,000rpm)	Voltage(AC) 50Hz/60Hz	Amps	Output Flow Rate(Lpm)		Oil Volume (Litre)		Weight (Including oil)			
					7Mpa(70Bar)	70Mpa(700Bar)	Tank	Effective				
UP-65SVG-1	Commutator, Single phase	0.65	220/230	6.5	4.0	0.42	3.0	2.0	16.6Kg			
			100/110	13.0								
UP-65SVG-1L (Large Tank)			220/230	6.5						5.0	4.0	19.0Kg
			100/110	13.0								

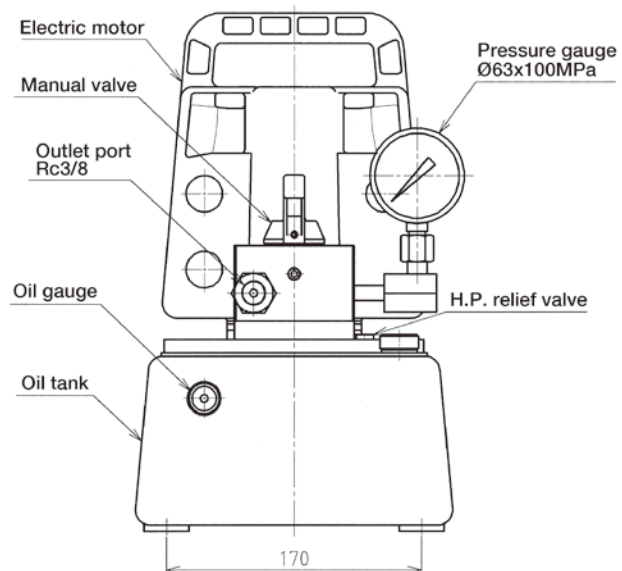
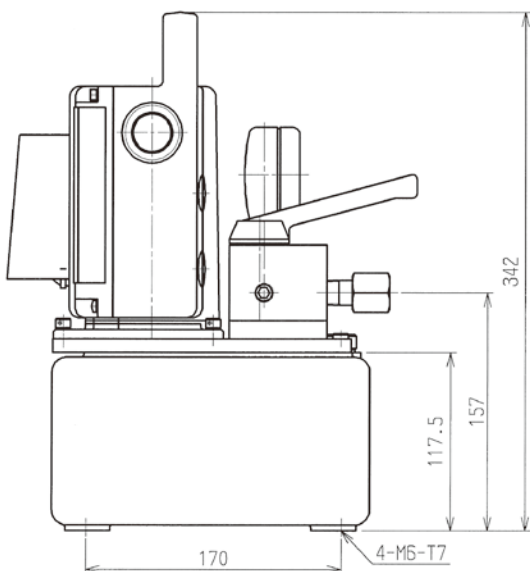
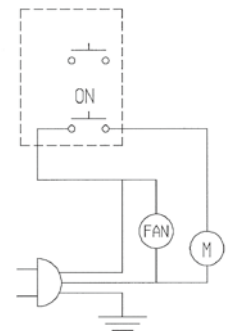
<Dimensions>(mm)



<Hydraulic circuit>



<Electric circuit>



Single Acting

UP-65SVG-3M

UP-65SVG-3M (Pressure gauge, Standard tank 3ℓ)

UP-65SVG-3ML (Pressure gauge, L tank 5ℓ)

UP-65SVS-3M (Pressure gauge, Pressure Switch, Standard tank 3ℓ)

UP-65SVS-3ML (Pressure gauge, Pressure Switch, L tank 5ℓ)



Valve type	Manual Needle Valve, Holding type
Switch	Pendant switch / ON button only
Accessories	Pressure Gauge Ø60
Feature	For Single Acting Cylinder by Manual Needle Valve, Hold on retraction

Advance

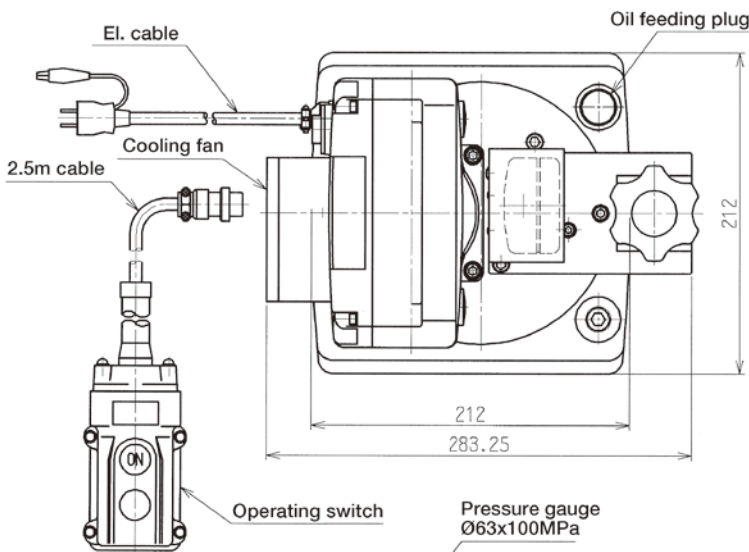
When the manual needle valve is closed and press ON the pendant switch, the motor rotates and the cylinder advances.

Retraction

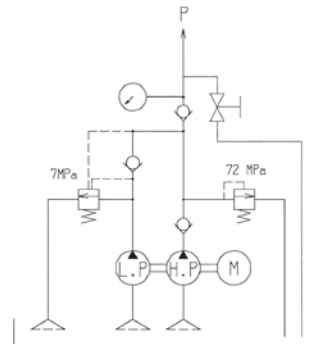
When the the manual needle valve is opened and the cylinder will return. When the manual needle valve is closed and the cylinder will stop. You can gradually lower the cylinder, so it is suitable for jacking up etc. There is no OFF button.

Model	Electric Motor	Mortor kW (2,000rpm)	Voltage(AC) 50Hz/60Hz	Amps	Output Flow Rate(Lpm)		Oil Volume (Litre)		Weight (Including oil)			
					7Mpa(70Bar)	70Mpa(700Bar)	Tank	Effective				
UP-65SVG-3M	Commutator, Single phase	0.65	220/230	6.5	4.0	0.42	3.0	2.0	16.6Kg			
			100/110	13.0								
UP-65SVG-3ML (Large Tank)			220/230	6.5						5.0	4.0	21.0Kg
			100/110	13.0								

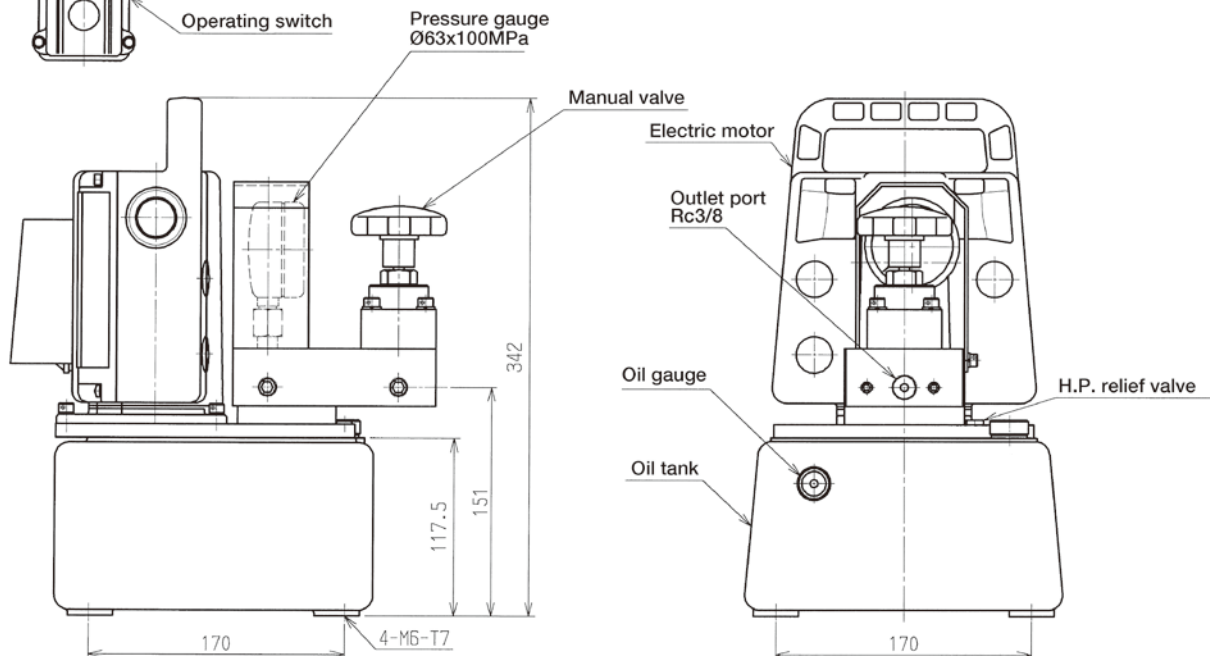
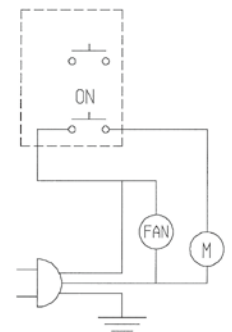
<Dimensions> (mm)



<Hydraulic circuit>



<Electric circuit>



Single Acting

UP-65SVG-4

UP-65SVG-4 (Pressure gauge, Standard tank 3 ℓ)

UP-65SVG-4L (Pressure gauge, L tank 5 ℓ)

UP-65SVS-4 (Pressure gauge, Pressure Switch, Standard tank 3 ℓ)

UP-65SVS-4L (Pressure gauge, Pressure Switch, L tank 5 ℓ)



Valve type	Solenoid Holding type
Switch	Pendant switch / On and Off button
Accessories	Pressure Gauge Ø60
Feature	For Single Acting Cylinder by Solenoid valve. Ideal for lifting, Jacking up.

Advance

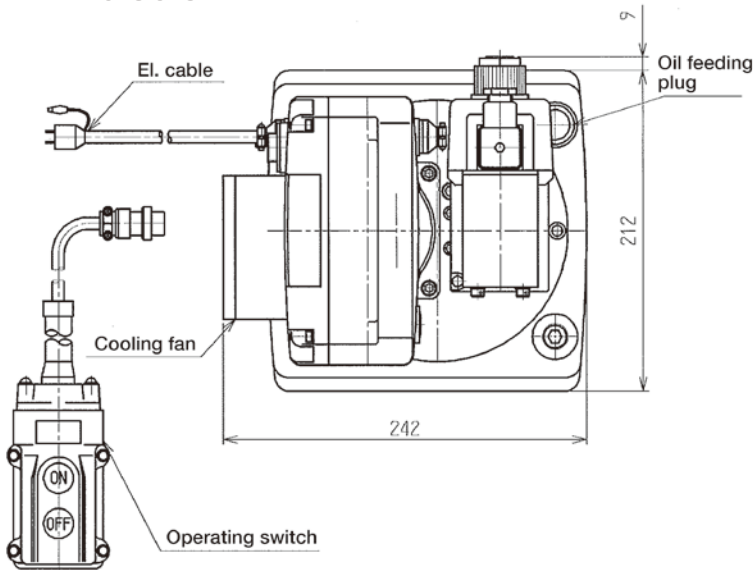
When ON switch is pressed, then the motor starts as well as a cylinder extends. When ON switch is released, the cylinder can be stopped and hold on advance.

Retraction

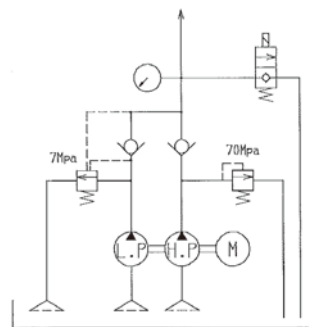
When OFF switch is pressed, then the cylinder starts to retract. When OFF switch is released, the cylinder can be stopped on retraction.

Model	Electric Motor	Mortor kW (2,000rpm)	Voltage(AC) 50Hz/60Hz	Amps	Output Flow Rate(Lpm)		Oil Volume (Litre)		Weight (Including oil)
					7Mpa(70Bar)	70Mpa(700Bar)	Tank	Effective	
UP-65SVG-4	Commutator, Single phase	0.65	220/230	6.5	4.0	0.42	3.0	2.0	17.7Kg
			100/110	13.0					
UP-65SVG-4L (Large Tank)			220/230	6.5			5.0	4.0	
			100/110	13.0					

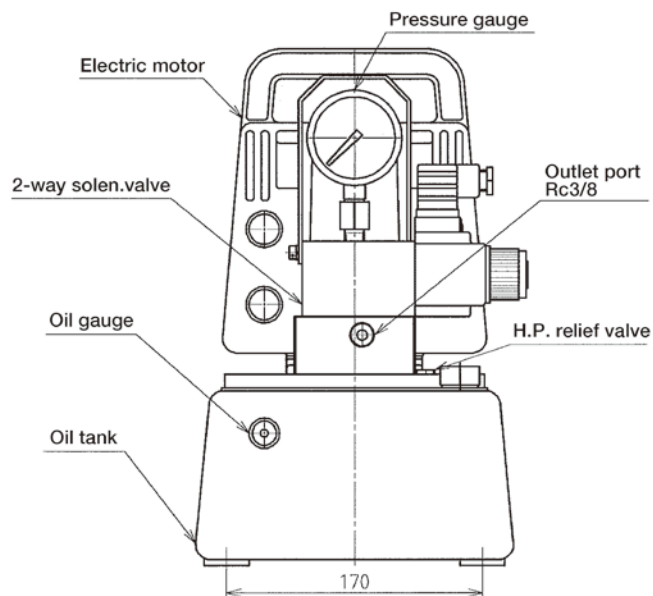
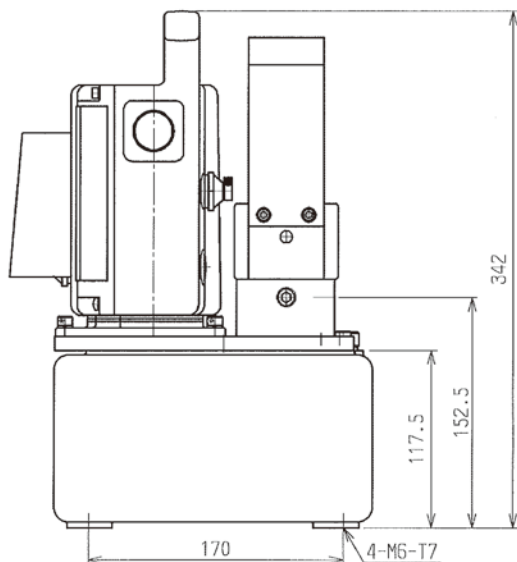
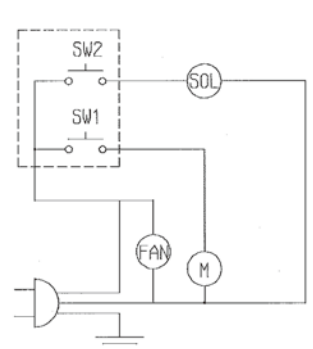
<Dimensions> (mm)



<Hydraulic circuit>



<Electric circuit>



Double Acting

UP-65SVG-7

UP-65SVG-7 (Pressure gauge, Standard tank 3 ℓ)

UP-65SVG-7L (Pressure gauge, L tank 5 ℓ)

UP-65SVS-7 (Pressure gauge, Pressure Switch, Standard tank 3 ℓ)

UP-65SVS-7L (Pressure gauge, Pressure Switch, L tank 5 ℓ)



Valve type Manual 4way-3position Holding type

Switch Pendant switch / A button only

Accessories Pressure Gauge Ø60

Feature For Double Acting cylinder by manual valve.

Advance

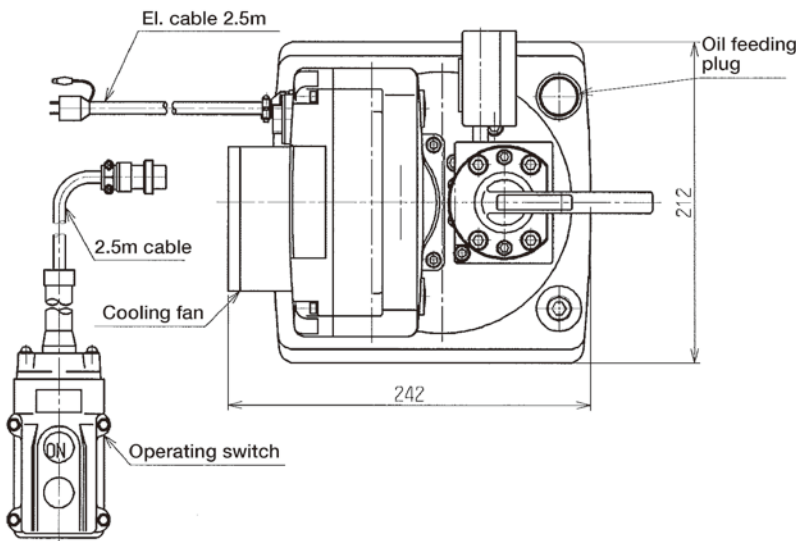
When the manual valve lever is set to the left (A), and press ON of the pendant switch, the motor rotates, and the cylinder advances. When ON switch is released, the cylinder can be stopped and hold on advance.

Retraction

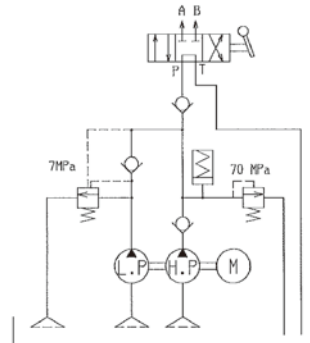
When the manual valve lever is set to the right (B), and press ON of the pendant switch, the motor rotates, and the cylinder retracts. When ON switch is released, the cylinder can be stopped and hold on retraction.

Model	Electric Motor	Mortor kW (2,000rpm)	Voltage(AC) 50Hz/60Hz	Amps	Output Flow Rate(Lpm)		Oil Volume (Litre)		Weight (Including oil)			
					7Mpa(70Bar)	70Mpa(700Bar)	Tank	Effective				
UP-65SVG-7	Commutator, Single phase	0.65	220/230	6.5	4.0	0.42	3.0	2.0	16.1Kg			
			100/110	13.0								
UP-65SVG-7L (Large Tank)			220/230	6.5						5.0	4.0	18.5Kg
			100/110	13.0								

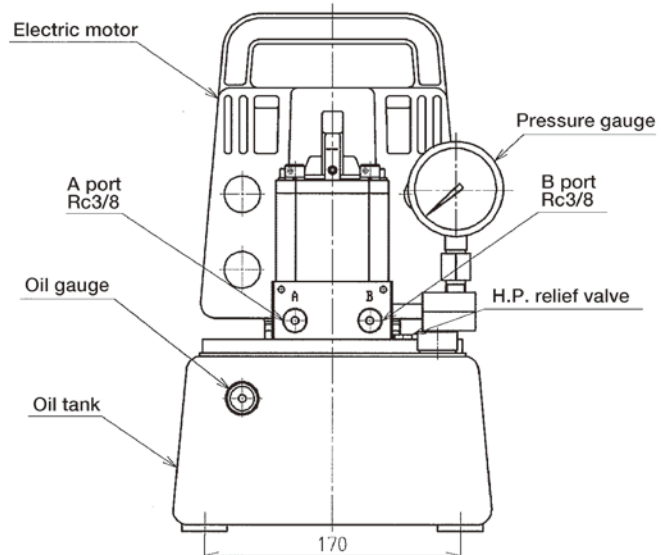
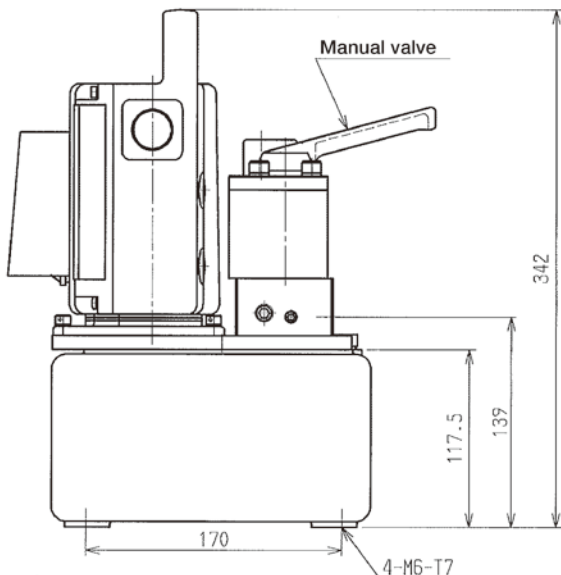
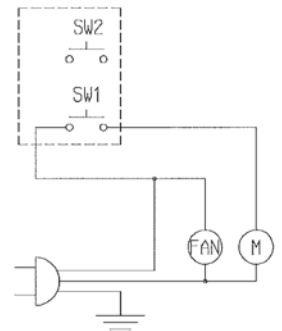
<Dimensions> (mm)



<Hydraulic circuit>



<Electric circuit>



Single Acting

UP-65SVG-2

UP-65SVG-2 (Pressure gauge, Standard tank 3ℓ)

UP-65SVG-2L (Pressure gauge, L tank 5ℓ)

UP-65SVG-2M (Pressure gauge, Pressure Switch, Standard tank 3ℓ)

UP-465SVG-2L (Pressure gauge, Pressure Switch, L tank 5ℓ)



Valve type	Solenoid Auto return type
Switch	Pendant switch / ON button only
Accessories	Pressure Gauge Ø60
Feature	For Single Acting Cylinder by Solenoid valve.

Advance

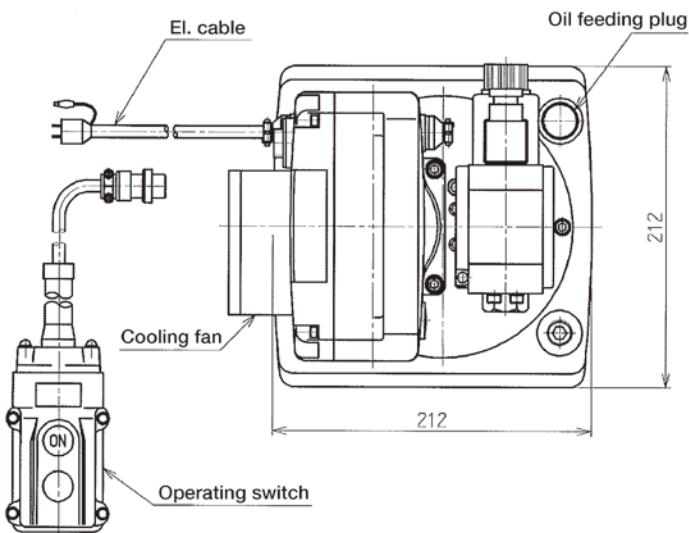
When ON switch is pressed, then the motor starts as well as a cylinder extends.

Retraction

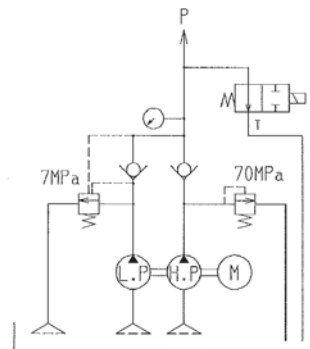
When ON switch is released, the cylinder automatically retracts at once. The cylinder cannot be stopped on retraction. There is no "OFF" button.

Model	Electric Motor	Mortor kW (2,000rpm)	Voltage(AC) 50Hz/60Hz	Amps	Output Flow Rate(Lpm)		Oil Volume (Litre)		Weight (Including oil)			
					7Mpa(70Bar)	70Mpa(700Bar)	Tank	Effective				
UP-65SVG-2	Commutator, Single phase	0.65	220/230	6.5	4.0	0.42	3.0	2.0	19.0Kg			
			100/110	13.0								
UP-65SVG-2L (Large Tank)			220/230	6.5						5.0	4.0	21.4Kg
			100/110	13.0								

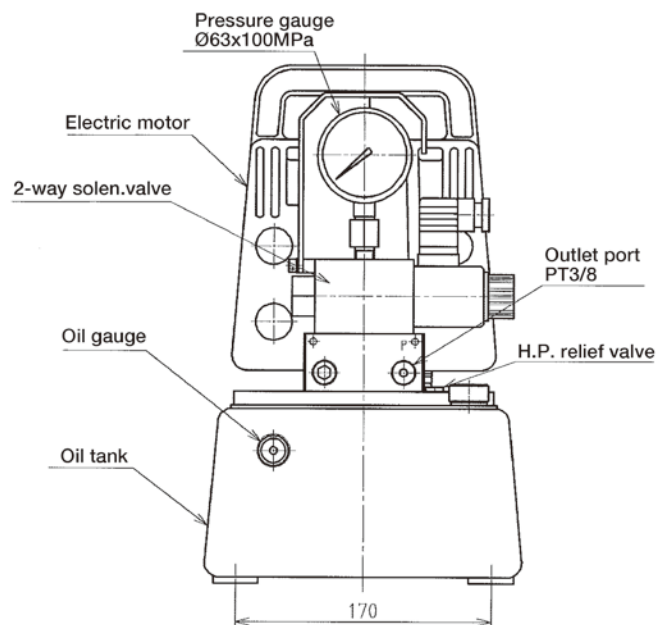
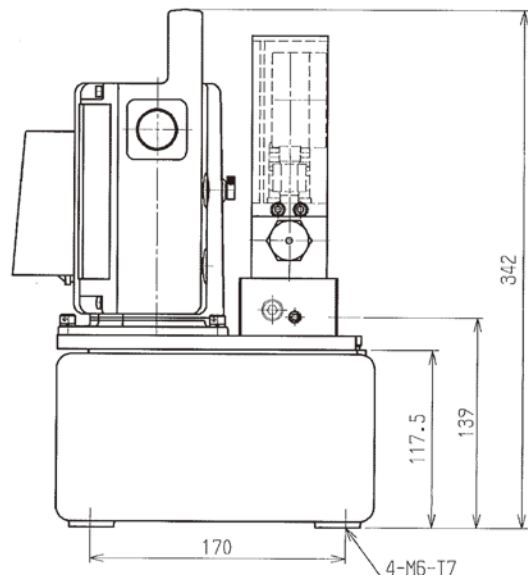
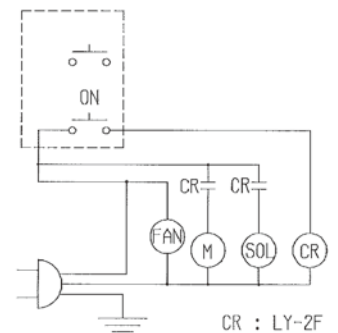
<Dimensions> (mm)



<Hydraulic circuit>



<Electric circuit>



Double Acting

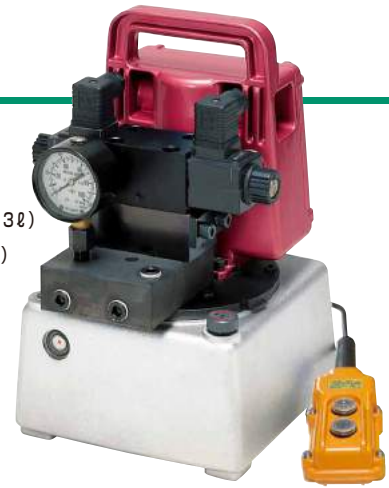
UP-65SVG-8SP UP-65SVG-8WP

UP-65SVG-8SP(8WP) (Pressure gauge, Standard tank 3ℓ)

UP-65SVG-8SPL(8WPL) (Pressure gauge, L tank 5ℓ)

UP-65SVG-8SP(8WP) (Pressure gauge, Pressure Switch, Standard tank 3ℓ)

UP-65SVG-8SPL(8WPL) (Pressure gauge, Pressure Switch, L tank 5ℓ)



Valve type	Solenoid 4way-3position Holding type
Switch	Pendant switch / A and B button
Accessories	Pressure Gauge Ø60
Feature	For Double Acting cylinder by solenoid valve.

Advance

When A switch is pressed, then the motor starts as well as a cylinder extends. When ON switch is released, the cylinder can be stopped and hold on advance.

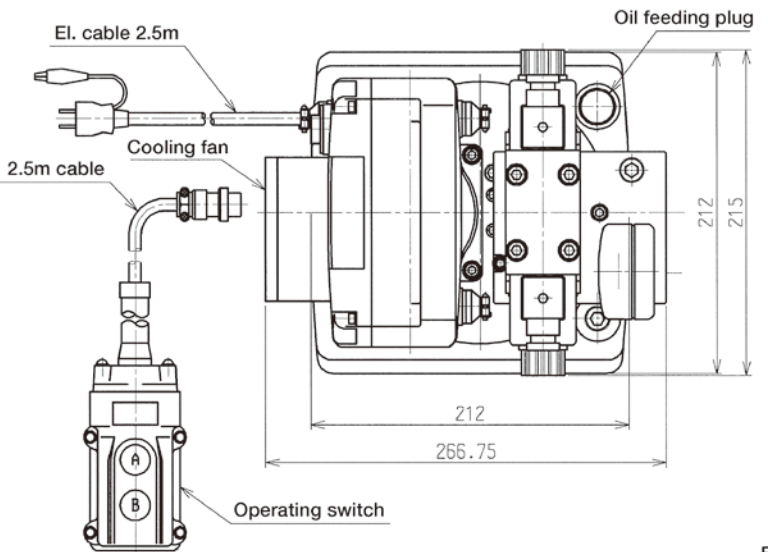
Retraction

When B switch is pressed, then the cylinder starts to retract. When B switch is released, the cylinder can be stopped on retraction.

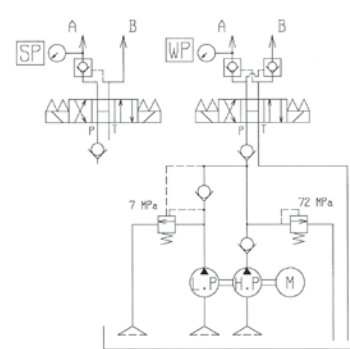
- 8SP model : Can be hold on A port
- 8WP model : Can be hold on A & B port

Model	Electric Motor	Mortor kW (2,000rpm)	Voltage(AC) 50Hz/60Hz	Amps	Output Flow Rate(Lpm)		Oil Volume (Litre)		Weight (Including oil)			
					7Mpa(70Bar)	70Mpa(700Bar)	Tank	Effective				
UP-65SVG-8SP/8WP	Commutator, Single phase	0.65	220/230	6.5	4.0	0.42	3.0	2.0	19.5Kg			
			100/110	13.0								
UP-65SVG-8SPL/8WPL (Large Tank)			220/230	6.5						5.0	4.0	21.9Kg
			100/110	13.0								

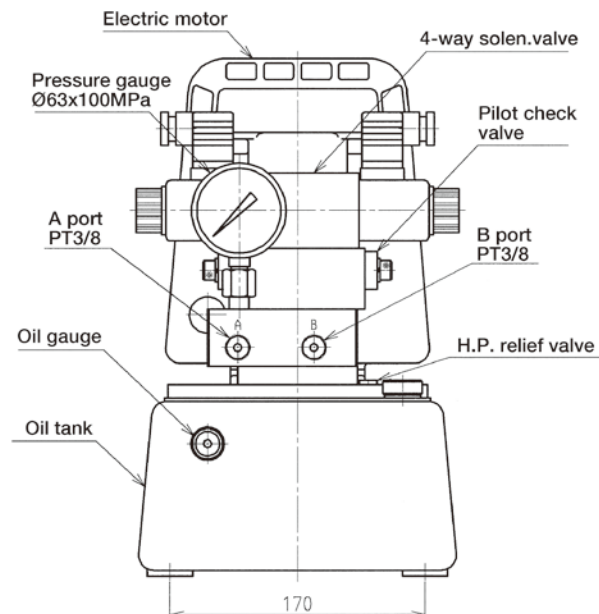
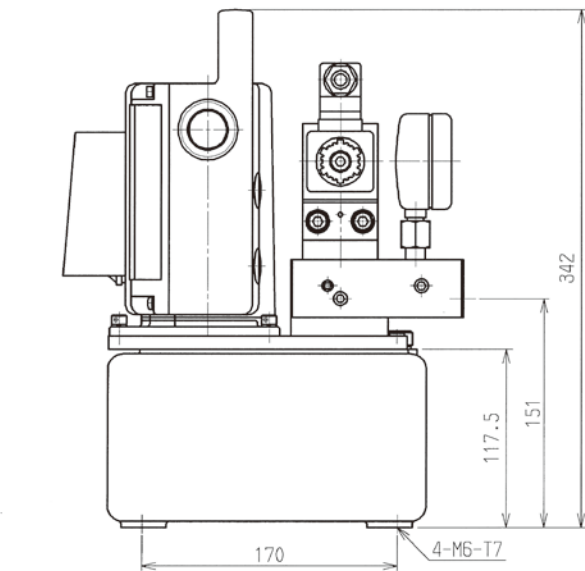
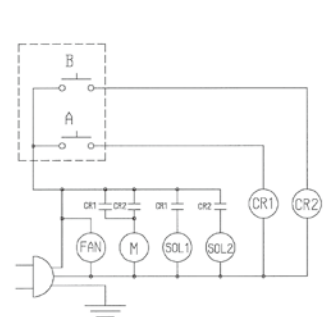
<Dimensions> (mm)



<Hydraulic circuit>



<Electric circuit>



Double Acting

UP-65SVG-8R

UP-65SVG-8R (Pressure gauge, Standard tank 3 ℓ)

UP-65SVG-8RL (Pressure gauge, L tank 5 ℓ)



Valve type Solenoid 4way-3position Adjustable pressure relief valve

Switch Pendant switch / A and B button

Accessories Pressure Gauge Ø60

Feature Adjustable pressure both A port and B port by relief valve. For Double Acting cylinder by solenoid valve.

Advance

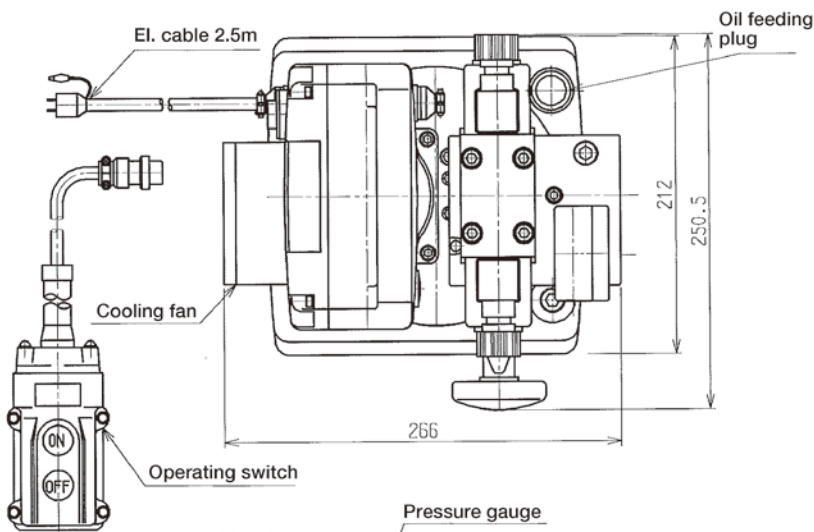
When A switch is pressed, then the motor starts. When A switch is released, the cylinder can be stopped. (NOT hold pressure)

Retraction

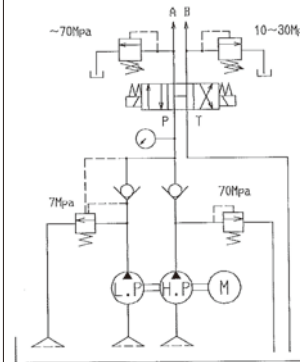
When B switch is pressed, then the cylinder starts to retract. When B switch is released, the cylinder can be stopped on retraction. (NOT hold pressure) *By additional pilot check valve, pressure can be hold. (on request)

Model	Electric Motor	Mortor kW (2,000rpm)	Voltage(AC) 50Hz/60Hz	Amps	Output Flow Rate(Lpm)		Oil Volume (Litre)		Weight (Including oil)			
					7Mpa(70Bar)	70Mpa(700Bar)	Tank	Effective				
UP-65SVG-8R	Commutator, Single phase	0.65	220/230	6.5	4.0	0.42	3.0	2.0	21.5Kg			
			100/110	13.0								
UP-65SVG-8RL (Large Tank)			220/230	6.5						5.0	4.0	23.9Kg
			100/110	13.0								

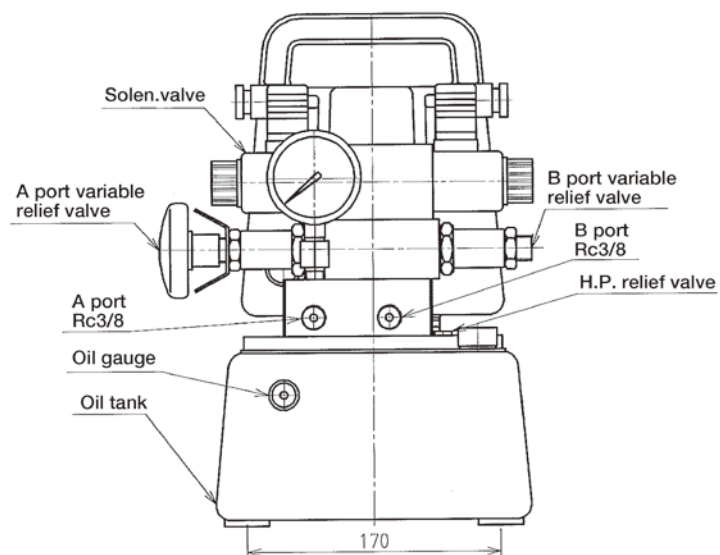
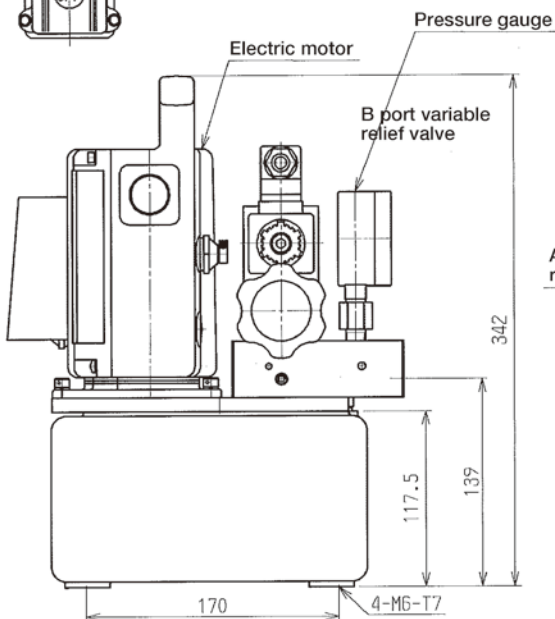
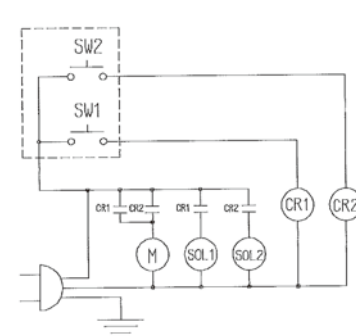
<Dimensions> (mm)



<Hydraulic circuit>



<Electric circuit>



Double Acting

UP-65SVG-8A UP-65SVG-8H

UP-65SVG-8A(8H) (Pressure gauge, Standard tank 3 ℓ)
UP-65SVG-8H(8HL) (Pressure gauge, L tank 5 ℓ)



Valve type	Solenoid 4way-3position
Switch	Pendant switch / A and B button
Accessories	Pressure Gauge Ø60
Feature	For Double Acting cylinder by solenoid valve.

Advance

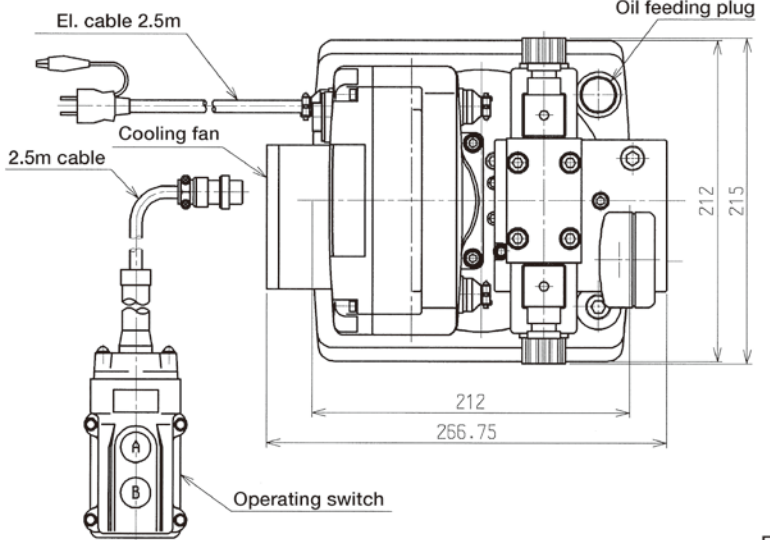
When A switch is pressed, then the motor starts. When A switch is released, the cylinder can be stopped but not hold on advance.
(For hold type, 8SP is recommended)

Retraction

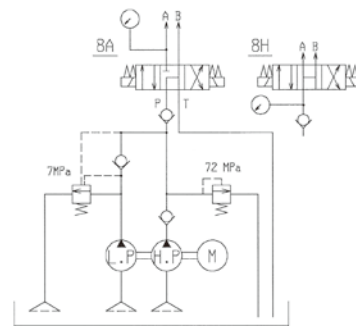
- 8A : When B switch is pressed, then the motor starts as well as a cylinder extends. When B switch is released, the cylinder can be stopped but not hold on retraction.
- 8H : When B switch is pressed, then the motor starts as well as a cylinder extends. Even though B switch is released, the cylinder can NOT be stopped. The cylinder retracts with external force. Since the residual pressure becomes zero at center, it will be smooth to attach and detach the coupler.

Model	Electric Motor	Mortor kW (2,000rpm)	Voltage(AC) 50Hz/60Hz	Amps	Output Flow Rate(Lpm)		Oil Volume (Litre)		Weight (Including oil)			
					7Mpa(70Bar)	70Mpa(700Bar)	Tank	Effective				
UP-65SVG-8A/8H	Commutator, Single phase	0.65	220/230	6.5	4.0	0.42	3.0	2.0	19.0Kg			
			100/110	13.0								
UP-65SVG-8AL/8HL (Large Tank)			220/230	6.5						5.0	4.0	21.4Kg
			100/110	13.0								

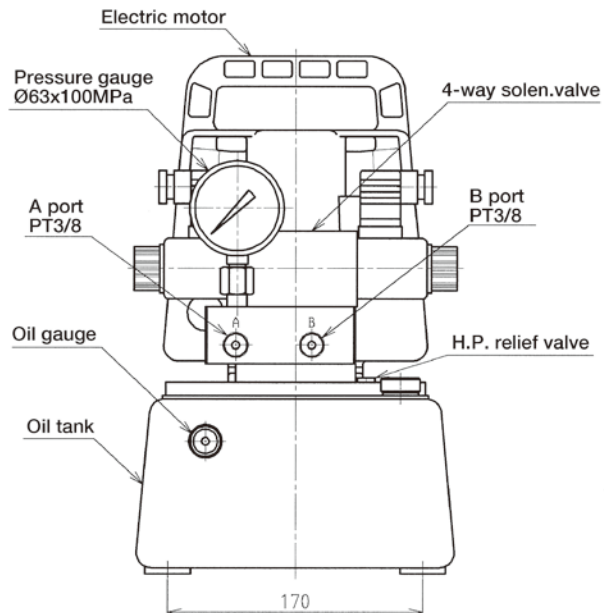
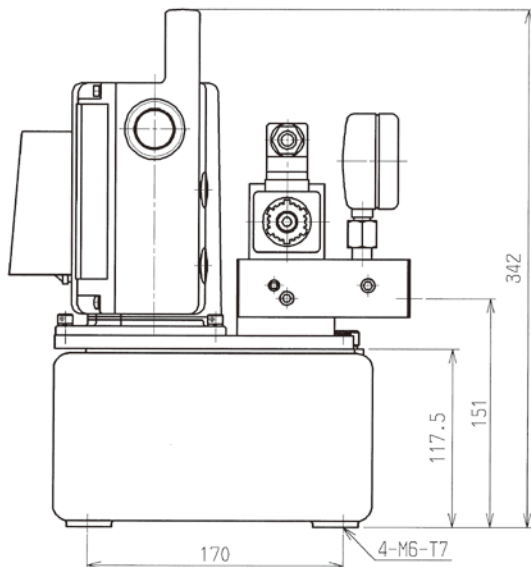
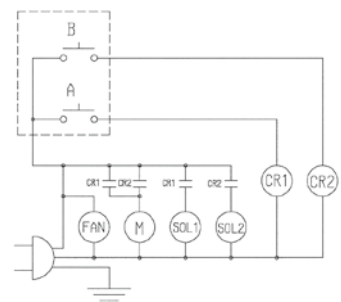
<Dimensions> (mm)



<Hydraulic circuit>



<Electric circuit>



Nittoh Zohki Co.,Ltd.

Sales office :

2-4-10 Kamezawa, Sumida-ku, Tokyo 130-0014 Japan
Tel. +81-3-3625-6551 Fax.+81-3-3625-6553

Factory :

585 Takashi, Mobara-shi, Chiba-Ken 297-0029 Japan
<http://www.nittohpower.jp>