

ELECTRIC HYDRAULIC PUMP

UP-40H series

Model : UP-40H GS-7

• Standard Tank Oil : 10 Litres



Model : UP-40H GS-3

• Standard Tank Oil : 10 Litres



Model : UP-40H GS-8

• Standard Tank Oil : 10 Litres



Low noise

- LOW-NOISE pump adopting induction motor with Single-phase 100V (400W).
- By changing the wiring and the power plug, it can be changed to single phase 200V.
- Continuous operation is possible because heat from induction motor is less and less.
- A trochoid pump is adopted as a low pressure pump, and a piston pump is adopted as a high pressure pump.
- Various valves and accessories can be stacked for many applications.
- To make it easy to carry and to protect the body, the pump has a frame.
- There is a fixing hole for mounting in the tank part, it is also possible to attach a caster.

Model	Motor (50/60Hz)				Output flow rate (L / m)		Oil		
	Insulation class	kW	Voltage (Single-phase)	Amps	RPM	High 70 MPa	Low 7.0 MPa	Tank size (Litres)	Effectiv (Litres)
UP-40H	Capacitor Start Motor E-type	0.4	100	8.5/7.8	1,420/1,710	0.3/0.36	3.7/4.5	10	6
			200	4.2/3.6					

UP-40HGS-1

Valve type	Manual 2 position Holding type
Switch	Pressure Switch
Accessories	Pressure Gauge Ø60
Weight (Incl.oil)	47kg

Advance

When the manual valve lever is set to the right, and press ON of the pendant switch, the motor rotates, and the cylinder advances. When ON switch is released, the cylinder can be stopped and hold on advance.

Retraction

When the manual valve lever is set to the left, the cylinder returns. There is no OFF button.

UP-40HGS-3

Valve type	Manual 2 position Holding type
Switch	Pressure Switch
Accessories	Pressure Gauge Ø60
Weight (Incl.oil)	47kg

Advance

When the manual needle valve is closed and press ON the pendant switch, the motor rotates and the cylinder advances.

Retraction

When the manual needle valve is opened and the cylinder will return. When the manual needle valve is closed and the cylinder will stop. You can gradually lower the cylinder, so it is suitable for jacking up etc. There is no OFF button.

UP-40HGS-4

Valve type	Manual 2 position Holding type
Switch	Pressure Switch
Accessories	Pressure Gauge Ø60
Weight (Incl.oil)	47kg

Advance

When ON switch is pressed, then the motor starts as well as a cylinder extends. When ON switch is released, the cylinder can be stopped and hold on advance.

Retraction

When OFF switch is pressed, then the cylinder starts to retract. When OFF switch is released, the cylinder can be stopped on retraction.

UP-40HGS-2

Valve type	Manual 2 position Holding type
Switch	Pressure Switch
Accessories	Pressure Gauge Ø60
Weight (Incl.oil)	47kg

Advance

When ON switch is pressed, then the motor starts as well as a cylinder extends.

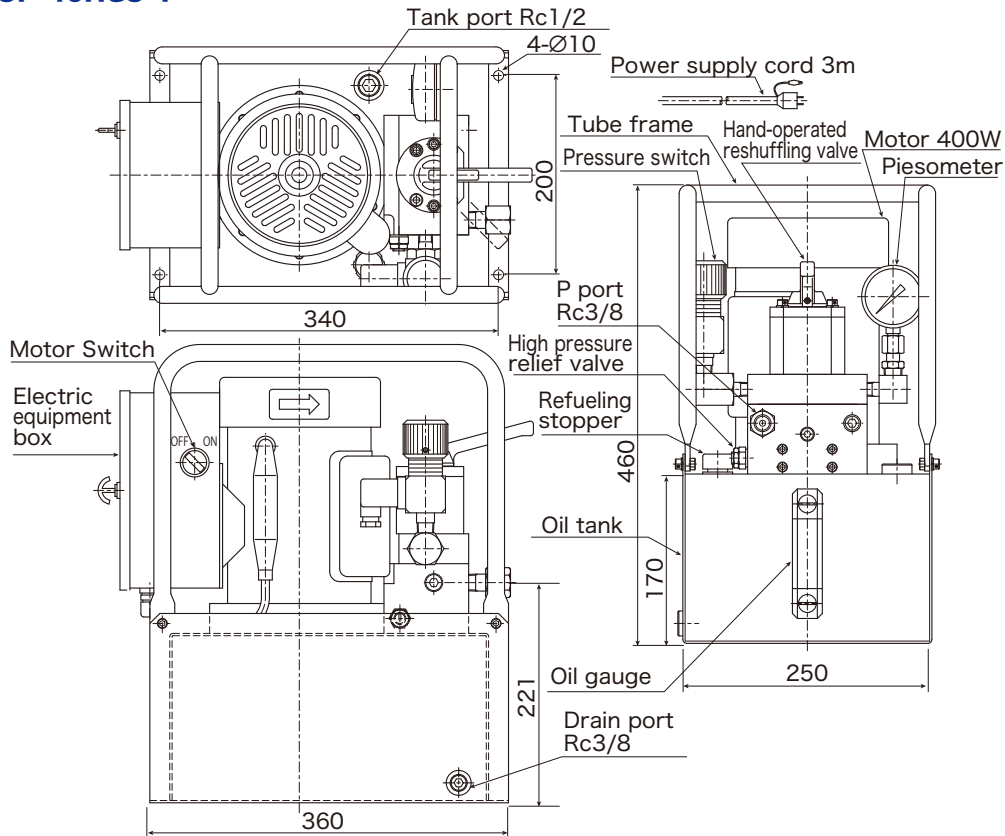
Retraction

When ON switch is released, the cylinder automatically retracts at once. The cylinder cannot be stopped on retraction. There is no "OFF" button.

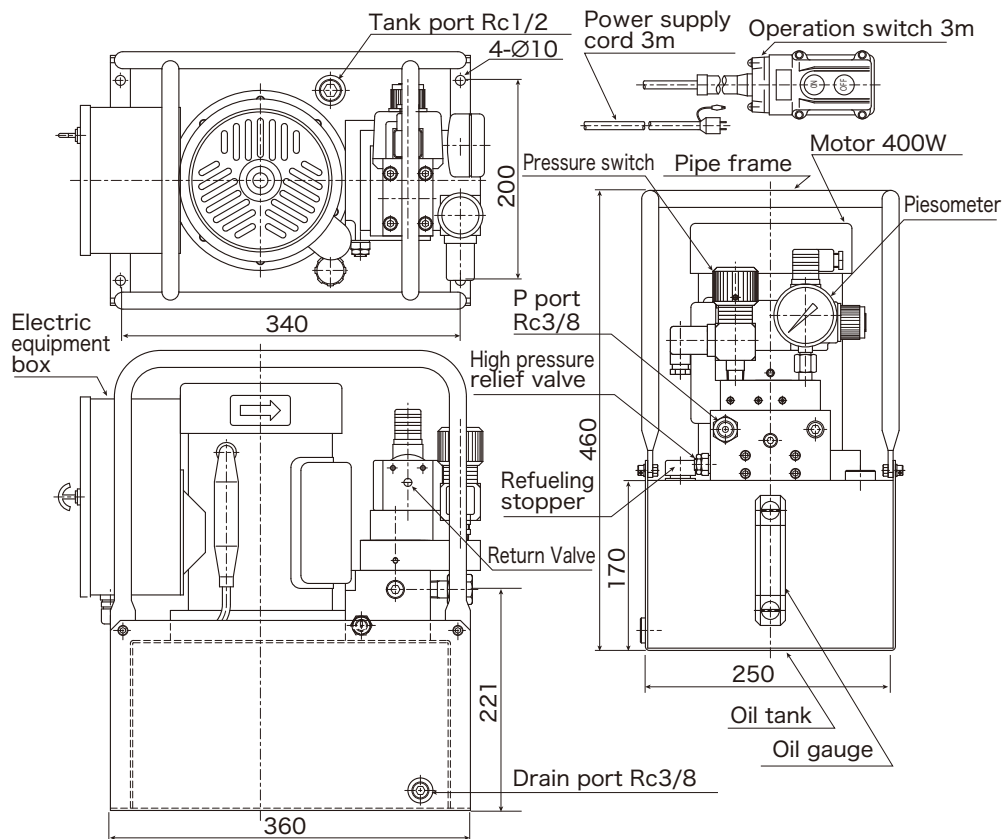
Single Acting

<Dimensions> (mm)

UP-40HGS-1

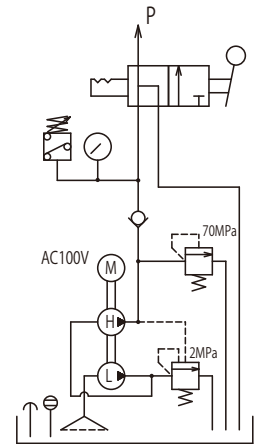


UP-40HGS-4

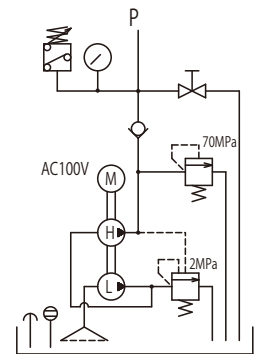


<Hydraulic circuit>

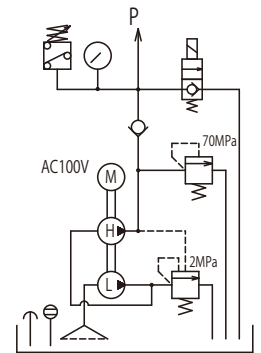
UP-40HGS-1



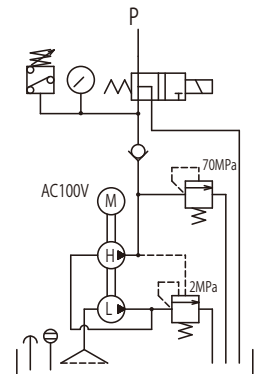
UP-40HGS-3



UP-40HGS-4



UP-40HGS-2



UP-40HGS-7

Valve type	Manual 4way 3 position Holding type
Switch	Pressure Switch
Accessories	Pressure Gauge Ø60
Weight (Incl.oil)	47kg

Advance

When the manual valve lever is set to the left (A), and press ON of the pendant switch, the motor rotates, and the cylinder advances. When ON switch is released, the cylinder can be stopped and hold on advance.

Retraction

Retraction When the manual valve lever is set to the right (B), and press ON of the pendant switch, the motor rotates, and the cylinder retracts. When ON switch is released, the cylinder can be stopped and hold on retraction.

UP-40HGS-8SP / 8WP

Valve type	Solenoid 4way 3 position Holding type
Switch	Pressure Switch
Accessories	Pressure Gauge Ø60
Weight (Incl.oil)	49kg

Advance

When A switch is pressed, then the motor starts as well as a cylinder extends. When ON switch is released, the cylinder can be stopped and hold on advance.

Retraction

When B switch is pressed, then the cylinder starts to retract. When B switch is released, the cylinder can be stopped on retraction.

8SP model : Can be hold on A port

8WP model : Can be hold on A & B port

UP-40HGS-8A

Valve type	Solenoid 4way 3 position
Switch	Pressure Switch
Accessories	Pressure Gauge Ø60
Weight (Incl.oil)	47kg

Advance

When A switch is pressed, then the motor starts. When A switch is released, the cylinder can be stopped but not hold on advance. (For hold type, 8SP is recommended)

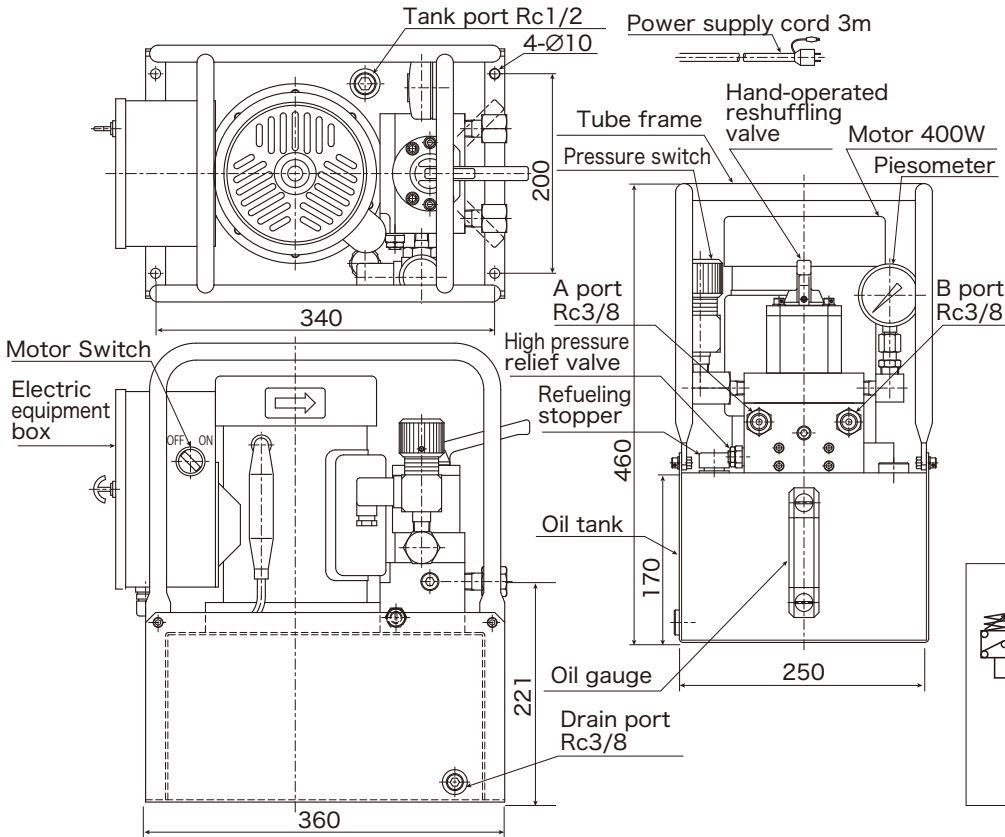
Retraction

Retraction When B switch is pressed, then the motor starts as well as a cylinder extends. When B switch is released, the cylinder can be stopped but not hold on retraction.

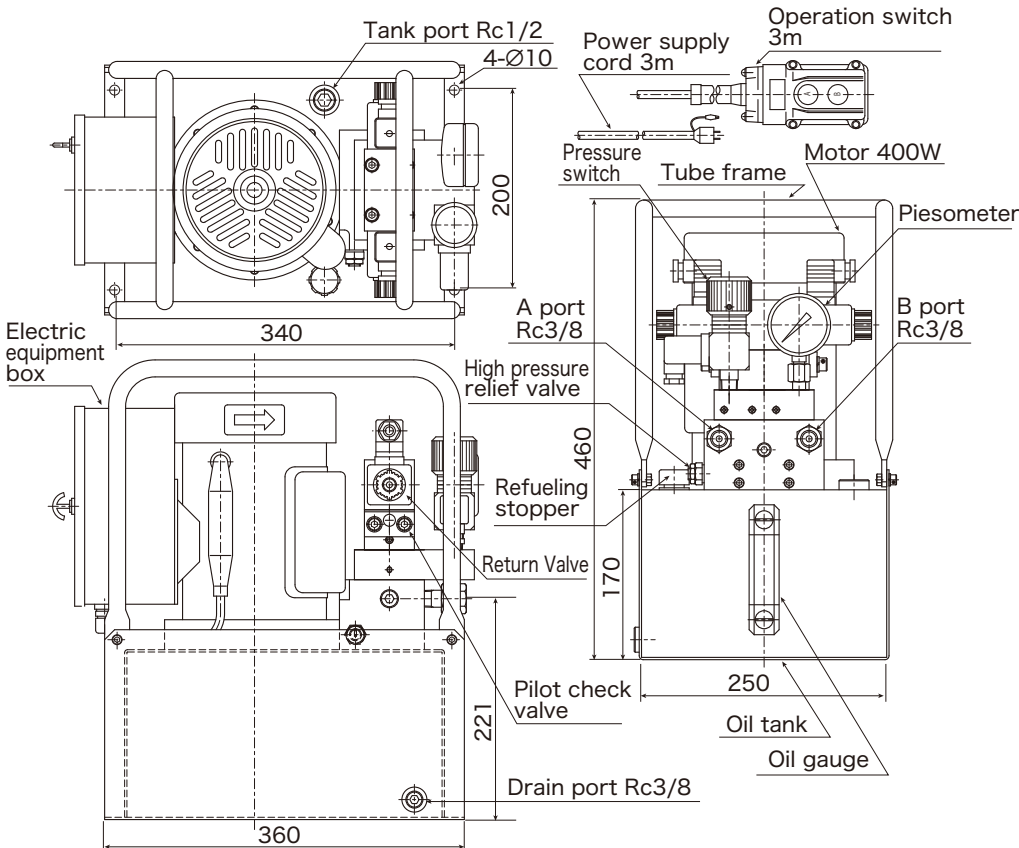
Double Acting

<Dimensions> (mm)

UP-40HGS-7

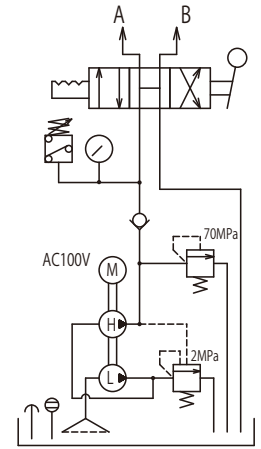


UP-40HGS-8SP / 8WP

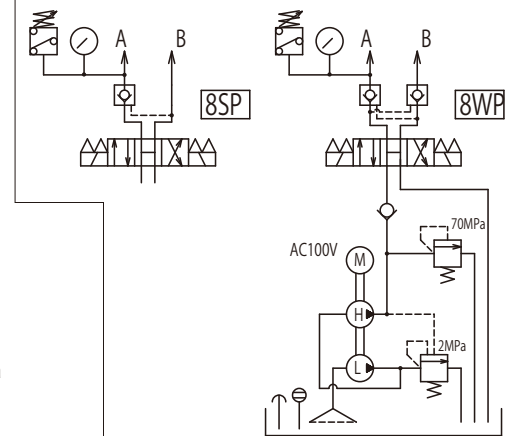


<Hydraulic circuit>

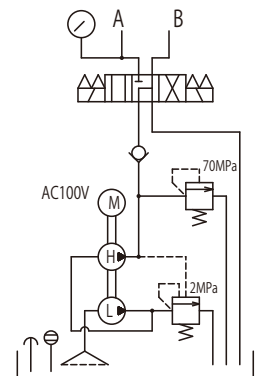
UP-40HGS-7



UP-40HGS-8SP / 8WP



UP-40HGS-8A



Nittoh Zohki Co.,Ltd.

Sales office :

2-4-10 Kamezawa, Sumida-ku, Tokyo 130-0014 Japan
Tel. +81-3-3625-6551 Fax.+81-3-3625-6553

Factory :

585 Takashi, Mobara-shi, Chiba-Ken 297-0029 Japan
<http://www.nittohpower.jp>